

sophie

ultimate comfort in a complete line of lounge seating

LOUNGE

GSA SIN # 33721

- Lounge collection, including guest, multi-seat, bariatric, hip, bench and tables
- Robust steel frame construction for high-traffic areas
- Cleanout space and wall-saver frame on selected models
- Field replaceable parts and arm caps
- Silver and black frame finishes
- Warranted to 350+ lbs.

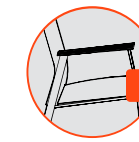


CREATING SOPHIE MODEL NUMBER

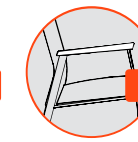
MODEL NUMBER CONTROL ARMS FRAME COLOR GRADE PACKAGING OPTIONS
8111 - **GT** - **A80** - **F** - **AC**

MODEL	CONTROL	DESCRIPTION	ARM	FABRIC/LEATHER										FEATURES	DIMENSIONS
				A	B/COM	C	D	E	F	G	L3/COL	L4	L5		
8111	GT	SINGLE GUEST	A80B/G	1191	1251	1326	1406	1506	1586	1716	1541	1666	1866	<ul style="list-style-type: none"> • Wall-saver frame • Soft-touch urethane arm pads • Non-marring adjustable glides • Warranted to 350 lbs. 	WIDTH: 25.0 DEPTH: 27.5 HEIGHT: 34.0 SEAT WIDTH: 20.0 SEAT DEPTH: 19.0 SEAT HEIGHT: 18.0 BACK WIDTH: 20.0 BACK HEIGHT: 19.0 COM: 1.7 YD COL: 35.0 SQ FT WEIGHT: 56.0 LB
8119	GT	BARIATRIC	A80B/G	1491	1586	1686	1791	1956	2096	2191	1841	2166	2401	<ul style="list-style-type: none"> • Wall-saver frame • Soft-touch urethane arm pads • Non-marring adjustable glides • Warranted to 500 lbs. 	WIDTH: 35.0 DEPTH: 27.5 HEIGHT: 34.0 SEAT WIDTH: 30.0 SEAT DEPTH: 19.0 SEAT HEIGHT: 18.0 BACK WIDTH: 29.0 BACK HEIGHT: 19.0 COM: 2.7 YD COL: 40.0 SQ FT WEIGHT: 66.0 LB

ARM OPTIONS



Soft Touch Pad - Black

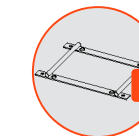


Soft Touch Pad - Gray

FRAME COLORS

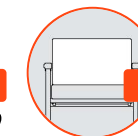


ADDITIONAL OPTIONS



Large Ganging Bracket

8199
\$99



Two Tone Contrasting Upholstery (seat and back)

TT
\$100*

*If the two upholstery selections are of different grades, the chair will price at the higher of the two grades.

sophie

ultimate comfort in a complete line of lounge seating

LOUNGE

GSA SIN # 33721

- Lounge collection, including guest, multi-seat, bariatric, hip, bench and tables
- Robust steel frame construction for high-traffic areas
- Cleanout space and wall-saver frame on selected models
- Field replaceable parts and arm caps
- Silver and black frame finishes
- Warranted to 350+ lbs.



CREATING SOPHIE MODEL NUMBER

MODEL NUMBER CONTROL ARMS FRAME COLOR GRADE PACKAGING OPTIONS
 8 1 - G T - A 8 0 - F - A C

MODEL	CONTROL	DESCRIPTION	ARM	FABRIC	DIMENSIONS										FEATURES	DIMENSIONS
					A	B/COM	C	D	E	F	G	L3/COL	L4	L5		
8112	GT	DOUBLE SEAT W/ OUTSIDE ARMS	A80B/G		1716	1836	1956	2126	2296	2516	2766	2241	2566	3016	<ul style="list-style-type: none"> • Wall-saver frame • Outer armrests feature soft-touch urethane arm pads • Non-marring adjustable glides • Warranted to 525 lbs. 	WIDTH: 46.0 DEPTH: 27.5 HEIGHT: 34.0 SEAT WIDTH: 20.0 SEAT DEPTH: 19.0 SEAT HEIGHT: 18.0 BACK WIDTH: 20.0 BACK HEIGHT: 19.0 COM: 3.0 YD COL: 70.0 YD WEIGHT: 87.0 LB
8122	GT	DOUBLE SEAT W/ CENTER ARM	A80B/G		1826	1946	2066	2236	2406	2626	2876	2351	2676	3126	<ul style="list-style-type: none"> • Wall-saver frame • Outer and inner armrests feature soft-touch urethane arm pads • Non-marring adjustable glides • Warranted to 525 lbs. 	WIDTH: 47.5 DEPTH: 27.5 HEIGHT: 34.0 SEAT WIDTH: 20.5 SEAT DEPTH: 19.0 SEAT HEIGHT: 18.0 BACK WIDTH: 20.0 BACK HEIGHT: 19.0 COM: 3.0 YD COL: 70.0 YD WEIGHT: 95.0 LB
8123	GT	TRIPLE SEAT W/ CENTER ARMS	A80B/G		2526	2706	2886	3096	3366	3621	3936	3051	3651	4251	<ul style="list-style-type: none"> • Wall-saver frame • Outer and inner armrests feature soft-touch urethane arm pads • Non-marring adjustable glides • Warranted to 750 lbs. 	WIDTH: 70.0 DEPTH: 27.5 HEIGHT: 34.0 SEAT WIDTH: 20.5 SEAT DEPTH: 19.0 SEAT HEIGHT: 18.0 BACK WIDTH: 20.0 BACK HEIGHT: 19.0 COM: 4.4 YD COL: 105.0 YD WEIGHT: 136.0 LB

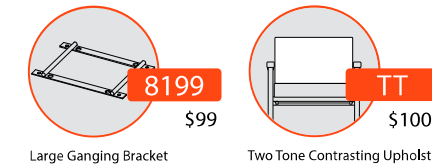
ARM OPTIONS



FRAME COLORS



ADDITIONAL OPTIONS



Please note, CAL TB 133 Fire Code option is charged per seat. Refer to page 14 for details.

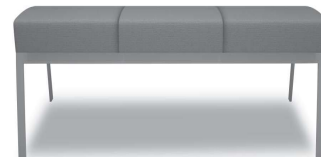
sophie

ultimate comfort in a complete line of lounge seating

LOUNGE BENCHES

GSA SIN # 33721

- Lounge collection, including guest, multi-seat, bariatric, hip, bench and tables
- Robust steel frame construction for high-traffic areas
- Cleanout space and wall-saver frame on selected models
- Field replaceable parts and arm caps
- Silver and black frame finishes
- Warranted to 350+ lbs.



CREATING SOPHIE MODEL NUMBER

MODEL NUMBER CONTROL FRAME COLOR LAMINATECOLOR GRADE PACKAGING
8100-GT-00F-000-0-AC

MODEL	CONTROL	DESCRIPTION	FABRIC	FEATURES	DIMENSIONS	FRAME COLORS	LAMINATE COLORS																																																		
8103	GT	TRIPLE BENCH	<table border="1"> <thead> <tr> <th>A</th> <th>B/COM</th> <th>C</th> <th>D</th> <th>E</th> <th>F</th> <th>G</th> <th>L3/COL</th> <th>L4</th> <th>L5</th> </tr> </thead> <tbody> <tr> <td>1908</td> <td>2018</td> <td>2118</td> <td>2253</td> <td>2408</td> <td>2533</td> <td>2678</td> <td>2493</td> <td>2608</td> <td>2908</td> </tr> <tr><td> </td><td> </td><td> </td><td> </td><td> </td><td> </td><td> </td><td> </td><td> </td><td> </td></tr> <tr><td> </td><td> </td><td> </td><td> </td><td> </td><td> </td><td> </td><td> </td><td> </td><td> </td></tr> <tr><td> </td><td> </td><td> </td><td> </td><td> </td><td> </td><td> </td><td> </td><td> </td><td> </td></tr> </tbody> </table>	A	B/COM	C	D	E	F	G	L3/COL	L4	L5	1908	2018	2118	2253	2408	2533	2678	2493	2608	2908																															<ul style="list-style-type: none"> • Three-seat bench • Non-marring adjustable glides • Warranted to 750 lbs. 	WIDTH: 61.5 DEPTH: 23.5 HEIGHT: 18.0 SEAT WIDTH: 20.5 SEAT DEPTH: 23.5 SEAT HEIGHT: 18.0 COM: 2.3 YD WEIGHT: 62.0 LB	BLACK BF SILVER SF	BLACK BKL DESIGNER WHITE DWL PLATINUM PTL
A	B/COM	C	D	E	F	G	L3/COL	L4	L5																																																
1908	2018	2118	2253	2408	2533	2678	2493	2608	2908																																																
8104	GT	DOUBLE BENCH W/ TABLE TOP	<table border="1"> <thead> <tr> <th>A</th> <th>B/COM</th> <th>C</th> <th>D</th> <th>E</th> <th>F</th> <th>G</th> <th>L3/COL</th> <th>L4</th> <th>L5</th> </tr> </thead> <tbody> <tr> <td>1806</td> <td>1871</td> <td>1941</td> <td>2026</td> <td>2131</td> <td>2206</td> <td>2306</td> <td>2206</td> <td>2281</td> <td>2481</td> </tr> <tr><td> </td><td> </td><td> </td><td> </td><td> </td><td> </td><td> </td><td> </td><td> </td><td> </td></tr> <tr><td> </td><td> </td><td> </td><td> </td><td> </td><td> </td><td> </td><td> </td><td> </td><td> </td></tr> <tr><td> </td><td> </td><td> </td><td> </td><td> </td><td> </td><td> </td><td> </td><td> </td><td> </td></tr> </tbody> </table>	A	B/COM	C	D	E	F	G	L3/COL	L4	L5	1806	1871	1941	2026	2131	2206	2306	2206	2281	2481																															<ul style="list-style-type: none"> • Two-seat bench with center tabletop • Non-marring adjustable glides • Warranted to 525 lbs. 	WIDTH: 61.5 DEPTH: 23.5 HEIGHT: 18.0 SEAT WIDTH: 20.5 SEAT DEPTH: 23.5 SEAT HEIGHT: 18.0 COM: 1.8 YD WEIGHT: 62.0 LB	BLACK BKL DESIGNER WHITE DWL PLATINUM PTL	BLACK BKL DESIGNER WHITE DWL PLATINUM PTL
A	B/COM	C	D	E	F	G	L3/COL	L4	L5																																																
1806	1871	1941	2026	2131	2206	2306	2206	2281	2481																																																

Please note, CAL TB 133 Fire Code option is charged per seat. Refer to page 14 for details.

sophie

ultimate comfort in a complete line of lounge seating

GSA SIN # 33721




- Stand-alone and linking tables that complement Sophie seating
- Silver and black frame finishes
- Five laminate colors
- Tables ship knocked down (KD)



CREATING SOPHIE MODEL NUMBER

MODEL NUMBER CONTROL FRAME COLOR LAMINATECOLOR PACKAGING
 8 1 - T B - F - K D

LOUNGE TABLES

MODEL	CONTROL	DESCRIPTION	TABLE	FEATURES	DIMENSIONS
8170 	TB	STAND-ALONE 22" X 42" RECTANGULAR	835	<ul style="list-style-type: none"> • Two stand-alone table sizes • Five laminate colors • Two frame colors 	WIDTH: 22.0 DEPTH: 42.0 HEIGHT: 17.0
8190 	TB	STAND-ALONE 24" SQUARE	692	<ul style="list-style-type: none"> • Two stand-alone table sizes • Five laminate colors • Two frame colors 	WIDTH: 24.0 DEPTH: 24.0 HEIGHT: 17.0
8191 	TB	CONNECTING 24" END-OF-RUN	640	<ul style="list-style-type: none"> • End-of-run table • Five laminate colors • Two frame colors • Linking tables are not intended for use with bench models (8102, 8103, 8104) 	WIDTH: 24.0 DEPTH: 24.0 HEIGHT: 13.5

FRAME COLORS

BLACK BF	SILVER SF
-------------	--------------

LAMINATE COLORS

BLACK BKL	DESIGNER WHITE DWL	PLATINUM PTL
--------------	--------------------------	-----------------